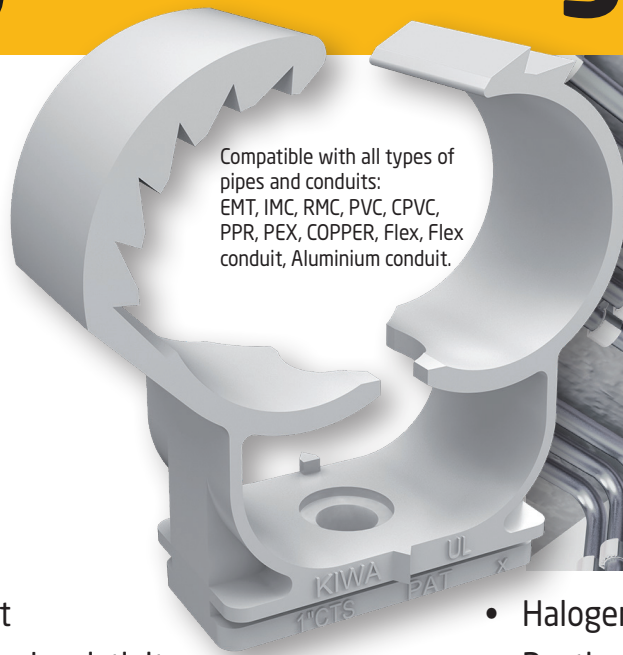


NEW!



Compatible with all types of pipes and conduits:
EMT, IMC, RMC, PVC, CPVC, PPR, PEX, COPPER, Flex, Flex conduit, Aluminium conduit.



“Concrete Screw Installation”



Plenum rated

- Reduced labour cost
- Thermal and electrical resistivity
- Non-magnetic
- Chemical resistance

- Halogen-free & phosphate-free
- Rusting and Corrosion inhibition
- Use with Galvanised Grabcon anchors or Friulsider TPP stainless steel anchors for the ultimate in corrosion free fastening

Part No.	Description	qty
QC-918STC	Quick Clip self-locking pipe clamp 14-18 mm - use with mechanical fixings (918STC)	100
QC-925STC	Quick Clip self-locking pipe clamp 20-25 mm - use with mechanical fixings (925STC)	50
QC-932STC	Quick Clip self-locking pipe clamp 25-32 mm - use with mechanical fixings (932STC)	50



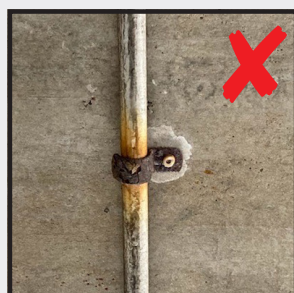
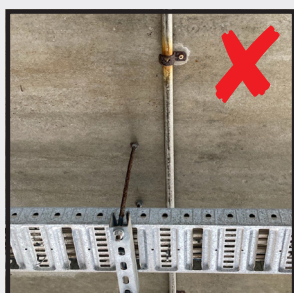
Grabcon® Hex Head Concrete & Masonry Screws

HEX GALVANISED Part No.	Head / Socket Size (mm)	Description	Drill Diameter (mm)	Min. Anchor Embedment (mm)	Screw Size (mm)	qty	qty
GCHX65032	Hex 5/16	6.5 x 32 Masonry Screw (1/4 x 1-1/4")	3/16"	25	6.5	100	1000



FRIULSIDER TPP Stainless Steel Hammer Screw
YOUR FIXING FACTORY

304SS (A2) Part No.	Description	Drill Diameter (mm)	Min. Anchor Embedment (mm)	Max. Fixture Thickness (mm)	Drive Type	Pin Thickness (mm)	qty	qty
FTPP06040SS	6 x 40mm (62701x06040)	6	30	10	Pozi 2	3.8	200	2000



**Why put up with
corroded clips,
ICCONS Quick Clip
is the answer!**



Copyright© 2022 ICCONS® Pty Ltd All Rights Reserved - Celo rev.1

CELO **STC** Smart Anchor Clamp

**Screw
& Click**



Application Sectors

- Commercial
- Residential
- Marine
- Swimming Pools
- Low Voltage
- Fish Farms
- Abattoirs
- Wet Rooms
- Livestock Farms
- Chemical Industry
- Clean Rooms
- Farming
- Hospitals
- Food Industry

Increase your productivity
with smart, easy and effective solutions

